



RHODE ISLAND COLLEGE

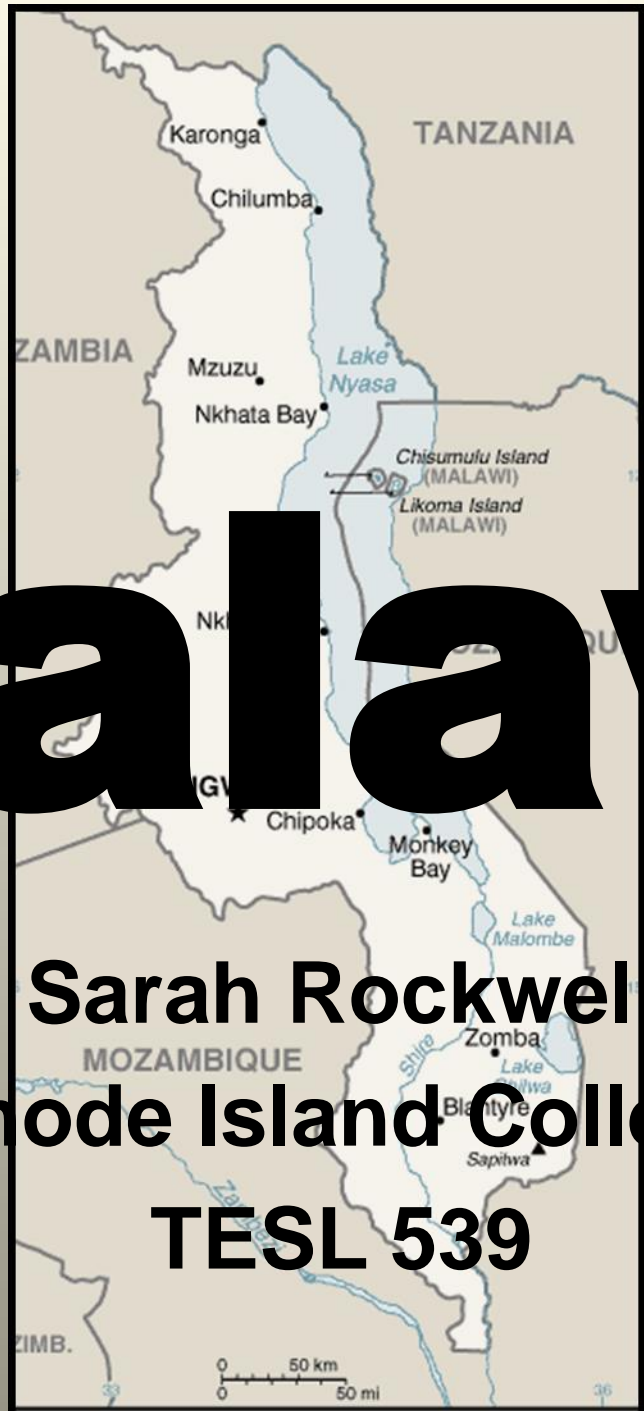
M.Ed. In TESL Program Country Informational Reports

Produced by Graduate Students in the M.Ed. In TESL Program
In the Feinstein School of Education and Human Development

Country: Malawi
Author: Sarah Rockwell

Program Contact Person: Nancy Cloud (ncloud@ric.edu)

Malawi



Sarah Rockwell
Rhode Island College
TESL 539

Malawi

- Malawi is located in southern Africa.
- Within the borders of Tanzania, Zambia, and Mozambique.
- Lake Nyasa (largely owned by Malawi) is said to be the largest fresh water body in the world.
- The lake contains more than 1,000 native fish species making it a viable resource.

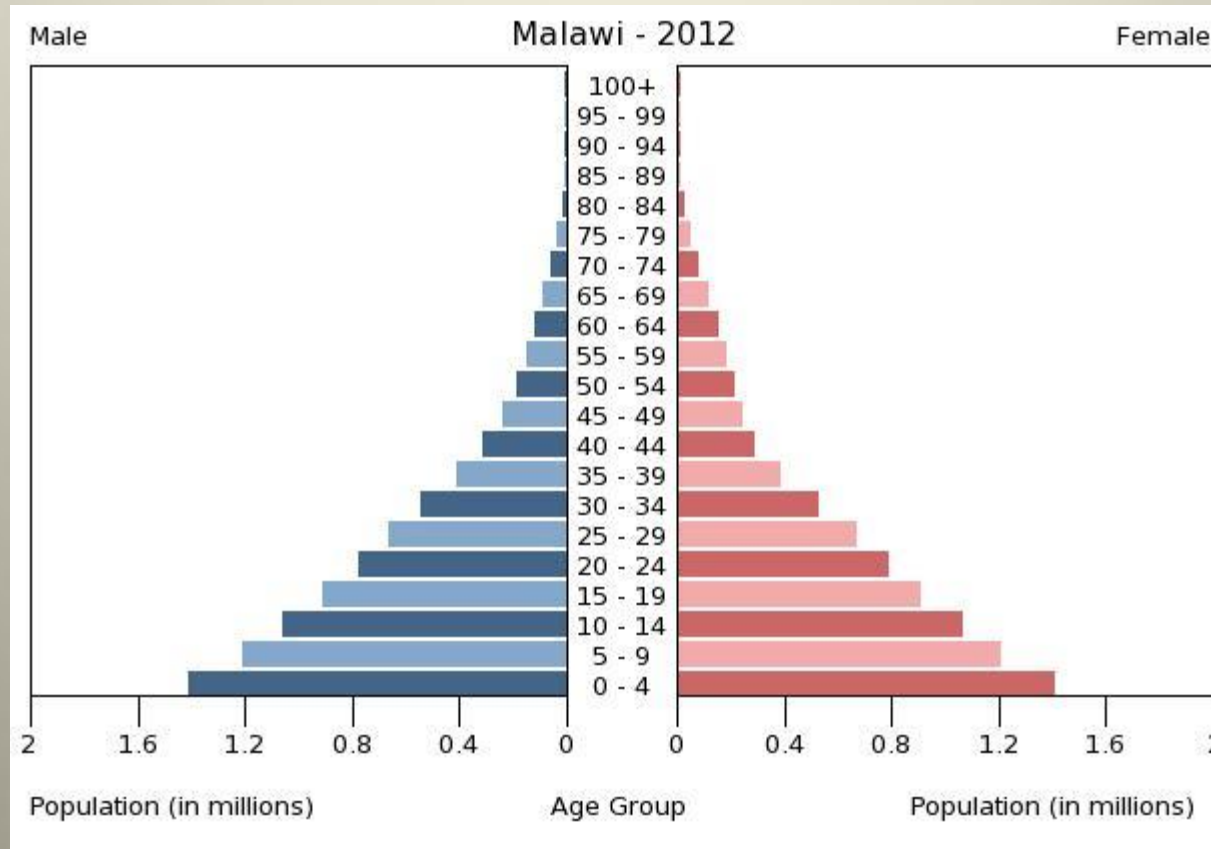
Central Intelligence Agency (2007)



- Chichewa is known as the official language for the country of Malawi.
- Towns and villages may have other languages that they speak and deliver primary compulsory education in.

Central Intelligence Agency (2007)

Demographics



The largest population of Malawians are between the ages of 0-14 years of age. This age group accounts for nearly half of the total population. The average life expectancy is about 53 years.

Demographics

- According to UNICEF, 13% of Malawian children lost their parents or caregivers.
- Out of the total population of Malawians, 11% (920,000) are living with HIV/ AIDS.



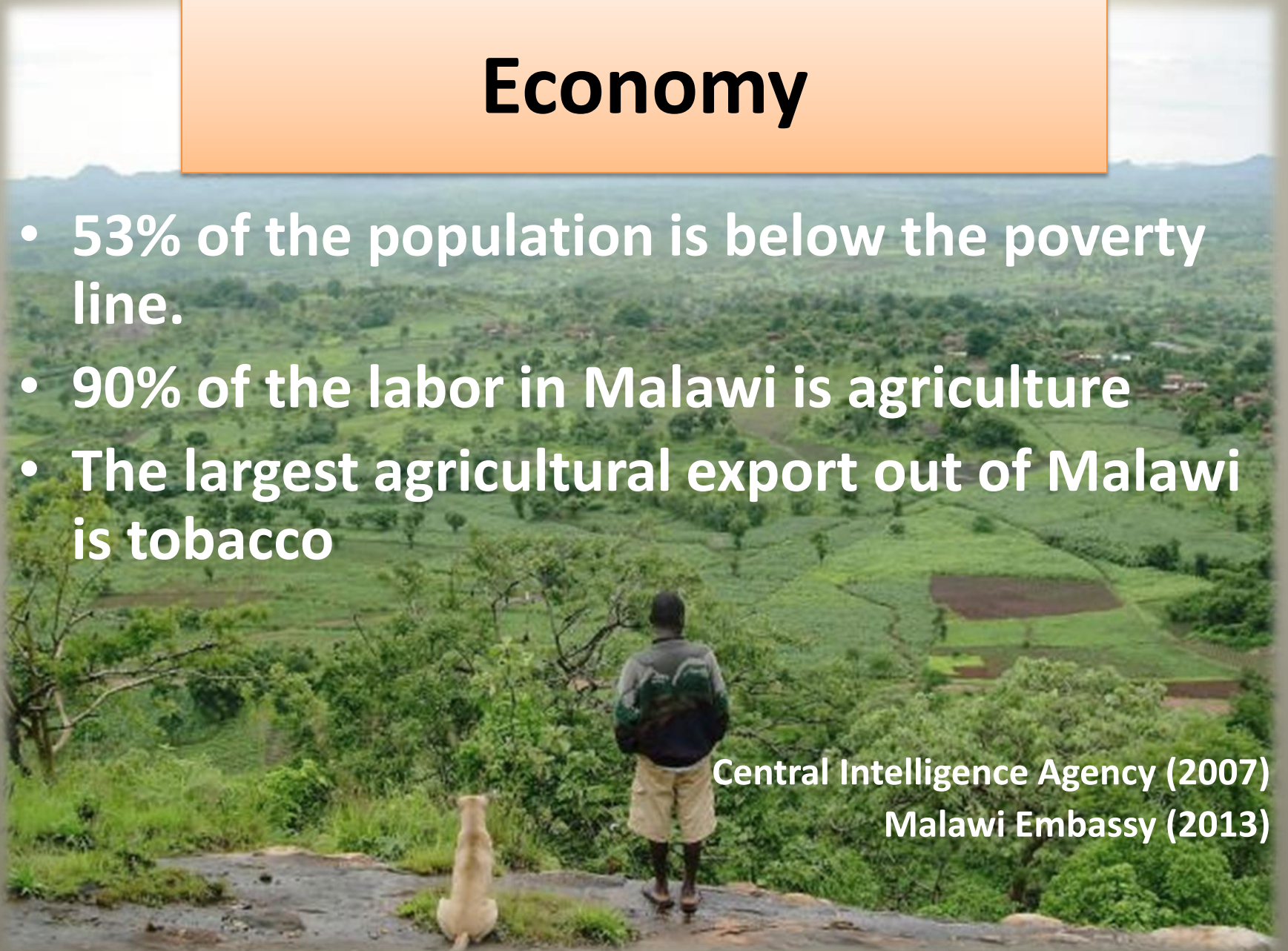
- The major vectorborne diseases (carried by other species) in Malawi is malaria and plague.
- For every 100 Malawians, there are .19 doctors.

Central Intelligence Agency (2007)
Taylor and Francis (2011)

Economy

- 53% of the population is below the poverty line.
- 90% of the labor in Malawi is agriculture
- The largest agricultural export out of Malawi is tobacco

Central Intelligence Agency (2007)
Malawi Embassy (2013)



Past Political Turmoil

- Malawi did not gain its independence until 1964.
 - At this time, the education system was reformed to be more relevant to citizens.
 - For 30 years, after Malawi won its independence, it was governed by a single party dictatorship.
 - During this time families were expected to cover the costs of their child's education.
- In 1994, Malawi government became multi-party. It was then that the government declared the first 8 years of education required and free to the public.

Central Intelligence Agency (2007)

Current Political Turmoil

- April 7th 2012, female women's activist Joyce Banda took over as president of Malawi.
- President Banda's main focus is on educating young people (especially women) about HIV and AIDS
- President Banda is also focusing on women's rights and economic empowerment.
- Many African countries and parts of Malawi itself are threatened by President Banda's extreme views.



Basu, M., Karimi, F. (2012)

Literacy

- Universal Public education was not implemented until 1994
- The total population above the age of 15 that can read and write is about 75%
- Males within this population are about 15% more literate than females.

Central Intelligence Agency (2007)



Education System



<http://vimeo.com/10232723>

- school in Malawi follows a 8-4-4 system
 - 8 years of Primary education
 - 4 years of Secondary Education
 - 4 years of Post Secondary Education
- The first 8 years of primary education are compulsory.

Ripple Africa (2012)

Education System

- The age of enrollment for Form 1 is 6.
 - A form is equivalent to a grade level in the U.S
- Due to date of enrollment and repeated grades, the maximum age of compulsory education is 18 in Form 8.

Growing Up in Malawi (2012)

GOAL Malawi (2013)

SACMEQ (2011).



Education System

- The first four years (Form 1-Form 4) of the primary grades are taught in the mother tongue for that region of Malawi.
- From Form 5 to Form 12, instruction is taught in English
- Throughout all Malawian schools, English is taught as a subject



GOAL Malawi (2013)

Barber, E., Bottomley, K., Mays, M., Moseley, B., Smith, T., Snyder, S., (2012)

Education System

- It was not until 1994 that the Malawian government passed a Free Public Education bill for compulsory education.
- Prior to 1994, families were expected to buy school uniforms and pay nominal fees for school supplies for their children.
- In today's school system, Malawians are only required to pay fees for the Secondary Education system. For this reason, the government mandated that Secondary Education for children in Malawi is NOT mandatory GOAL Malawi (2013).

Attitudes

- Malawians are known to be a quiet and reserved people.
- High respect for elders
- Most Malawians are friendly toward Americans as long as they follow societal norms.

Malawi Missions (2007)



Attitudes

Malawians are a very respectful people to individuals that follow their social norms and customs. Here are some of the most common norms:



- Do not tell someone “No” when they ask for something or ask to do something for you
- Kissing and hugging is only done in private

Malawi Missions (2007)

Attitudes

Some customs may seem strange to Americans, but they are the norm in Malawi and should be respected.

- It is common for two men or two women to hold hands in public as a sign of affection, but inappropriate for a man and woman to hold hands.
- Men and women (even those who are married) do not sit together during church services. They remain in separate areas

Central Intelligence Agency (2007)

Malawi Missions (2007)

Sources

1. Basu, M., Karimi, F. (2012) Longtime Women's Activist Banda Sworn in as Malawi President .*CNN. Cable News Network*. Retrieved Mar. 06 2013 Retrieved from<<http://www.cnn.com/2012/04/07/world/africa/malawi-president>>.
2. Central Intelligence Agency. (2007). *The World Factbook. Central Intelligence Agency Office of Public Affairs*. Retrieved on Mar 6, 2013. Retrieved from <<https://www.cia.gov/library/publications/the-world-factbook/geos/mi.html>>.
3. GOAL Malawi. (2013) *Education*. Retrieved from <http://www.goal.ie/Education_Programmes/254>.
4. SACMEQ (2011). *Education in Malawi - Southern and Eastern Africa Consortium. for Monitoring Educational Quality*. Retrieved from <<http://www.sacmeq.org/education-malawi.htm>>.

Sources

5. International Lake Environment Committee (2013) *Lake Nyasa (Lake Malawi)*. Retrieved from <<http://www.ilec.or.jp/database/afr/afr-13.html>>.
6. Raising Malawi Inc (2009) *Orphans.Raising Malawi*. Retrieved from <<http://www.raisingmalawi.org/pages/why-orphans>>.
7. Ripple Africa (2012) *Growing Up in Malawi*. Retrieved from <http://vimeo.com/10232723>
10. Malawi Embassy (2013) *The Embassy of the Republic of Malawi to Japan*. Retrieved from <http://www.malawiembassy.org/en/visit/index.html>

Journals:

1. Barber, E., Bottomley, K., Mays, M., Moseley, B., Smith, T., Snyder, S., (2012) Learners, Educators and Leaders Survey Nine Years of Trans-Global Collaboration in Malawi. *5th International Conference of Education, Research and Innovations*, p. 5884-5892 Retrieved 06 Mar. 2013 <<http://library.iated.org/view/BARBER2012LEA>>.
2. Taylor and Francis (2012) Malawi in Crisis. *Review of African Political Economy*. Volume 39. Retrieved from <<http://www.tandfonline.com/doi/abs/10.1080/03056244.2012.688651>>.

M.Ed. in TESL Program
Nancy Cloud, Director
Educational Studies Department
Rhode Island College, HBS 206 #5
600 Mt. Pleasant Avenue
Providence, RI 02908
Phone (401) 456-8789
Fax (401) 456-8284
ncloud@ric.edu

The M.Ed. in TESL Program at Rhode Island College
is Nationally Recognized by TESOL and NCATE



REACH
INSPIRE
CONNECT